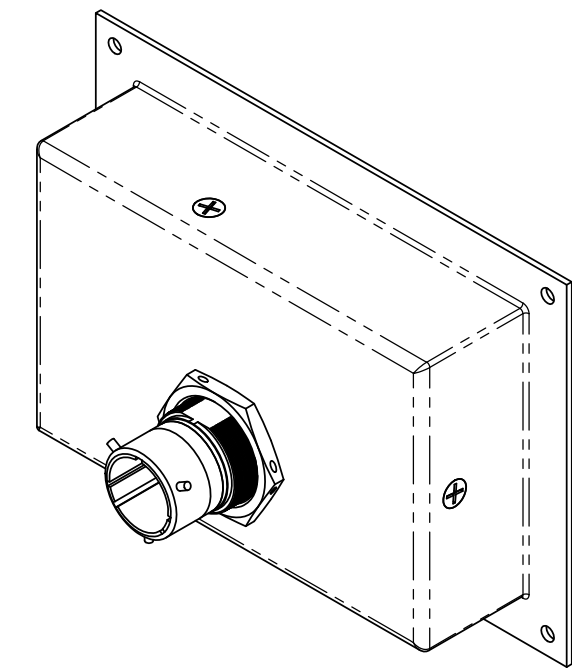
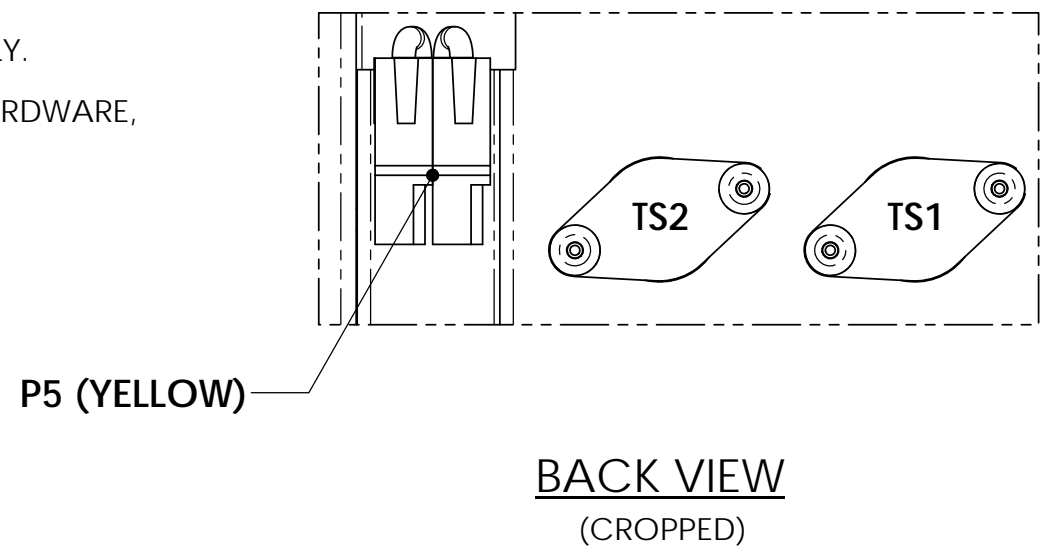


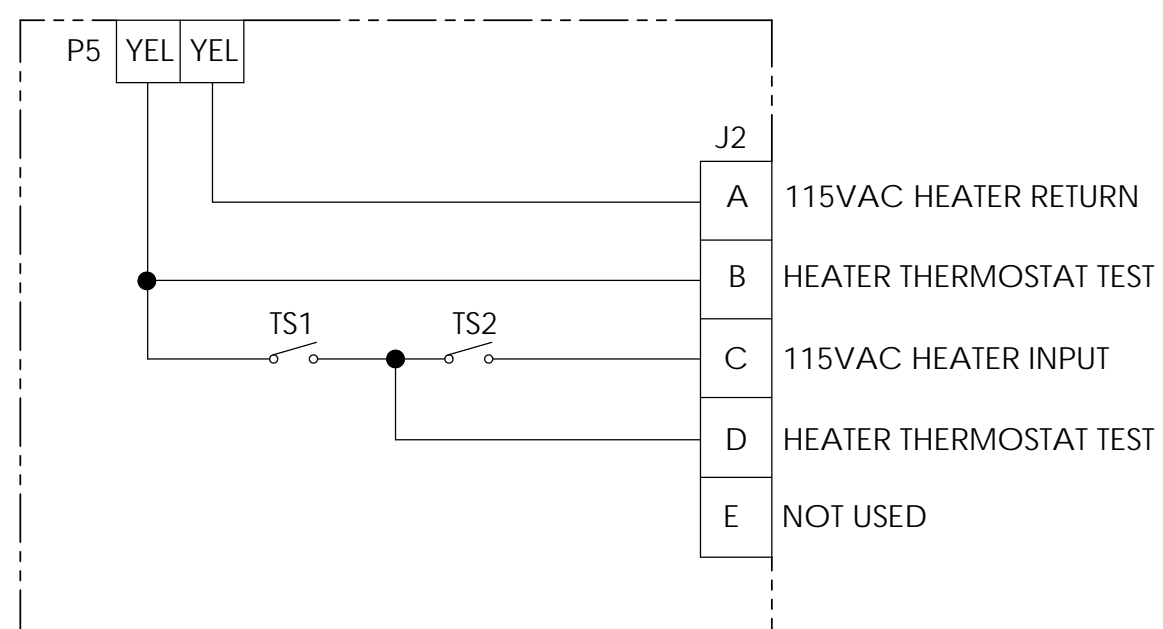
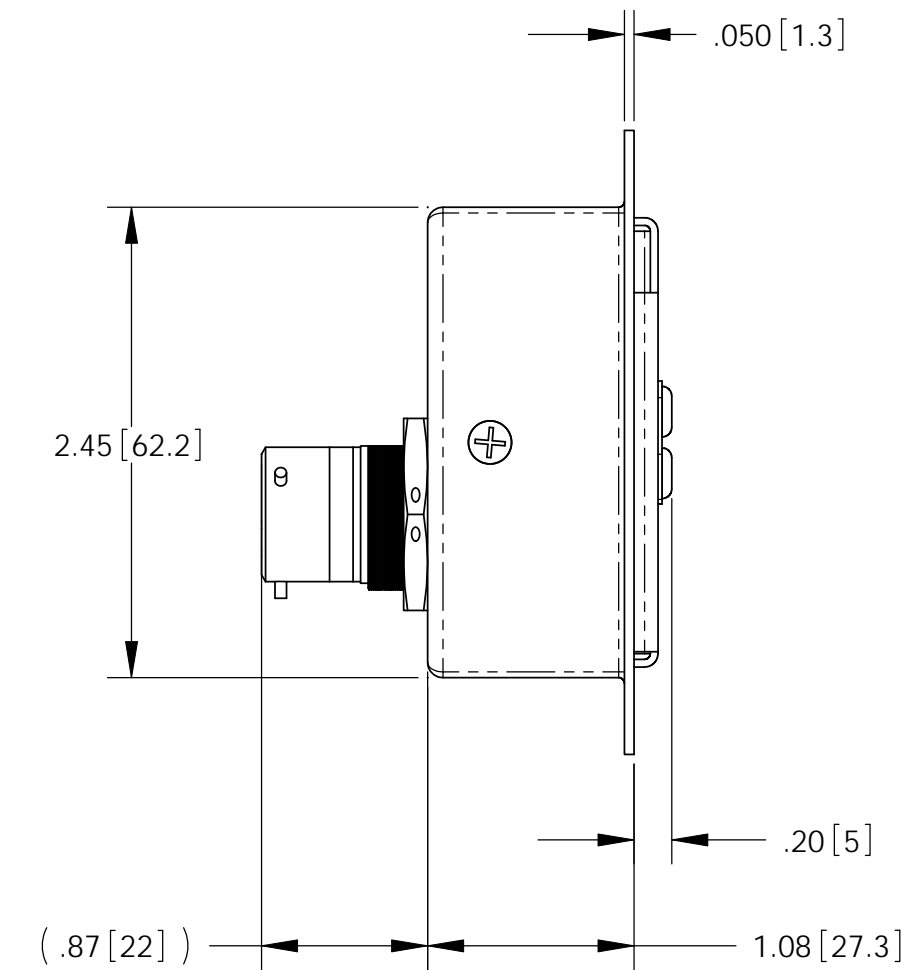
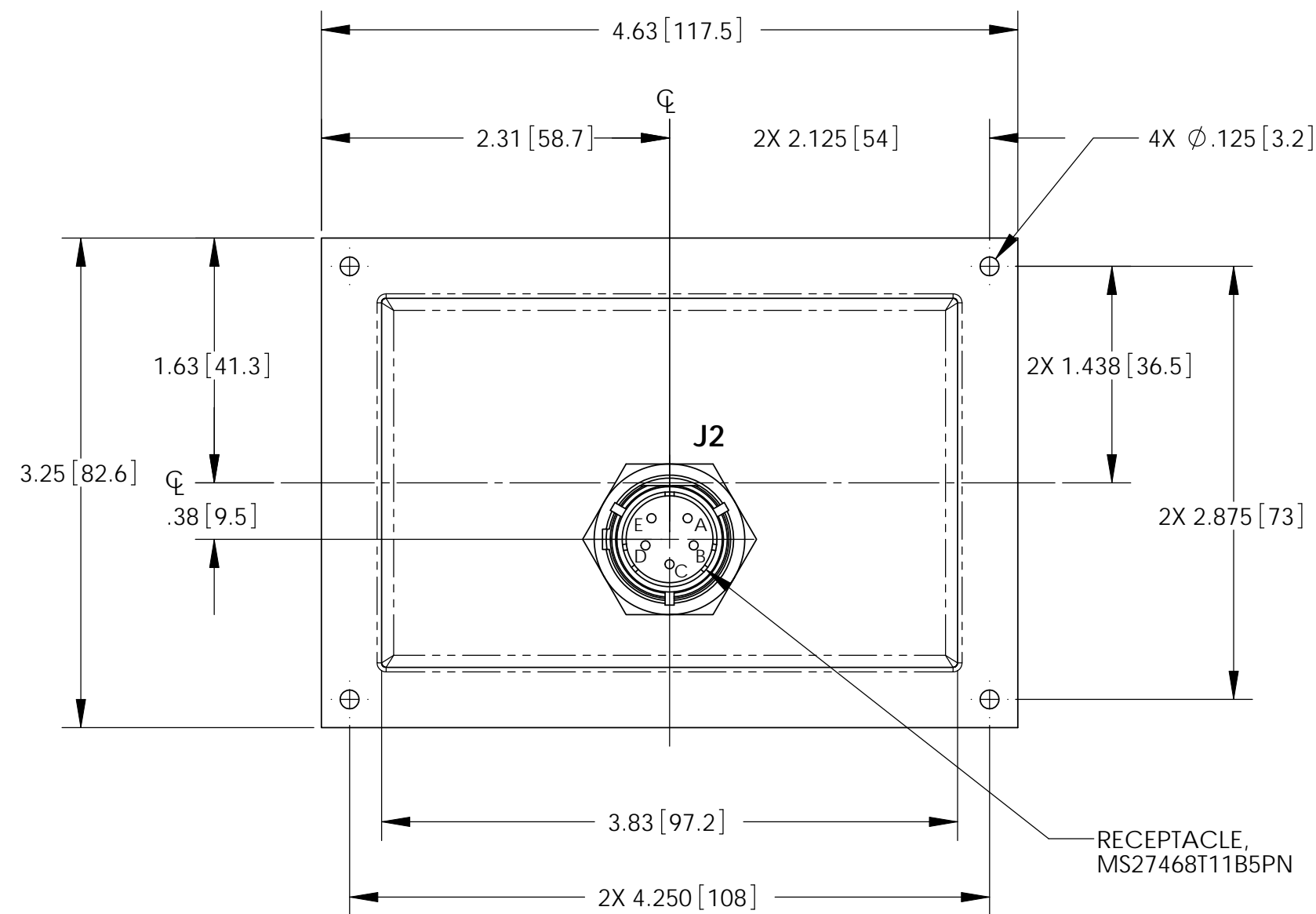
NOTES: UNLESS OTHERWISE SPECIFIED

1. MANUFACTURED AND INSPECTED IAW AS9100 QUALITY SYSTEM REQUIREMENTS.
2. SEE DRAWING NO. 9708 AND PROCEDURE P-1000 FOR ASSEMBLY AND TEST INSTRUCTION. PROCEDURES AND ASSEMBLY DRAWINGS ARE FOR INTERNAL USE ONLY.
3. REFER TO KIT DRAWING 5-0386 FOR ICA, MOUNTING HARDWARE, AND INSTALLATION INSTRUCTIONS.
4. DIMENSIONS ARE INCH [MILLIMETERS].

REVISIONS			
REV	DESCRIPTION	DATE	APPROVED



PART NUMBER: HCU-2



ENVELOPE DRAWING

UNLESS OTHERWISE SPECIFIED DIMENSIONS ARE IN INCHES TOLERANCES ARE:			CONTRACT NO.		CONCORDE BATTERY CORPORATION 2009 SAN BERNARDINO RD, W. COVINA, CA 91790		
FRACTIONS	DECIMALS	ANGLES	APPROVALS	DATE	TITLE		
$\pm 1/32$.XX \pm .06 XXX \pm .015	$\pm 1^\circ$	DRAWN A. MISTRETTA	3/22/11	HEATER CONTROL UNIT, HCU-2		
TREATMENT	NONE	CHECKED AMIII	3/25/11	SIZE C	CAGE CODE 63017	DWG NO. HCU-2	REV
FINISH	NONE	APPROVED JBT	3/26/11	SCALE 1:1	SHEET 1 OF 1		
SIMILAR TO	CALC WT	ISSUED JJ	3/29/11				