
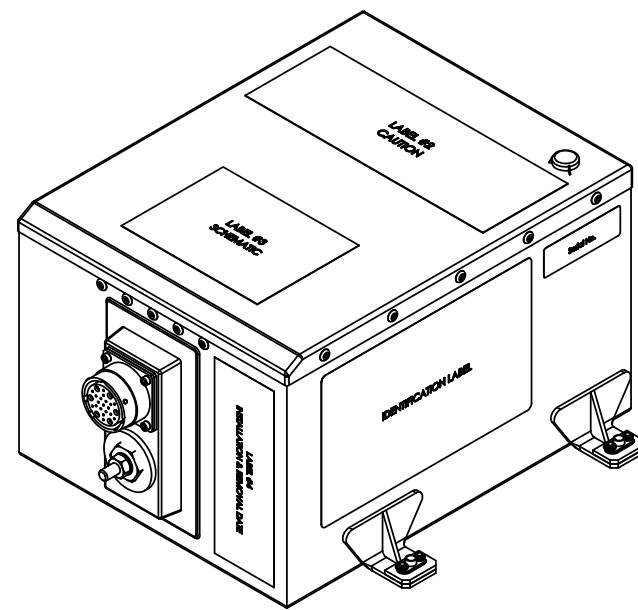
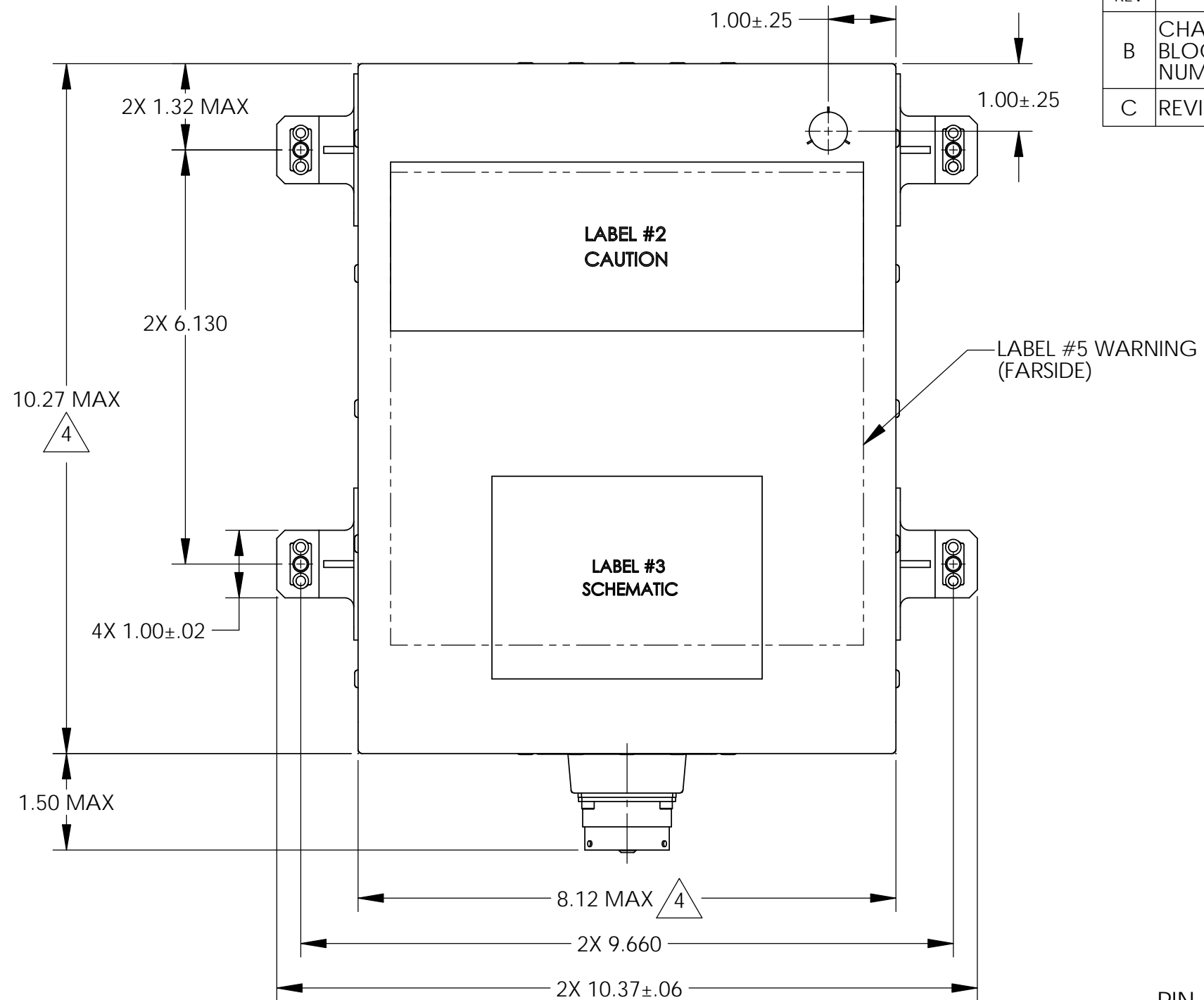


NOTES: UNLESS OTHERWISE SPECIFIED

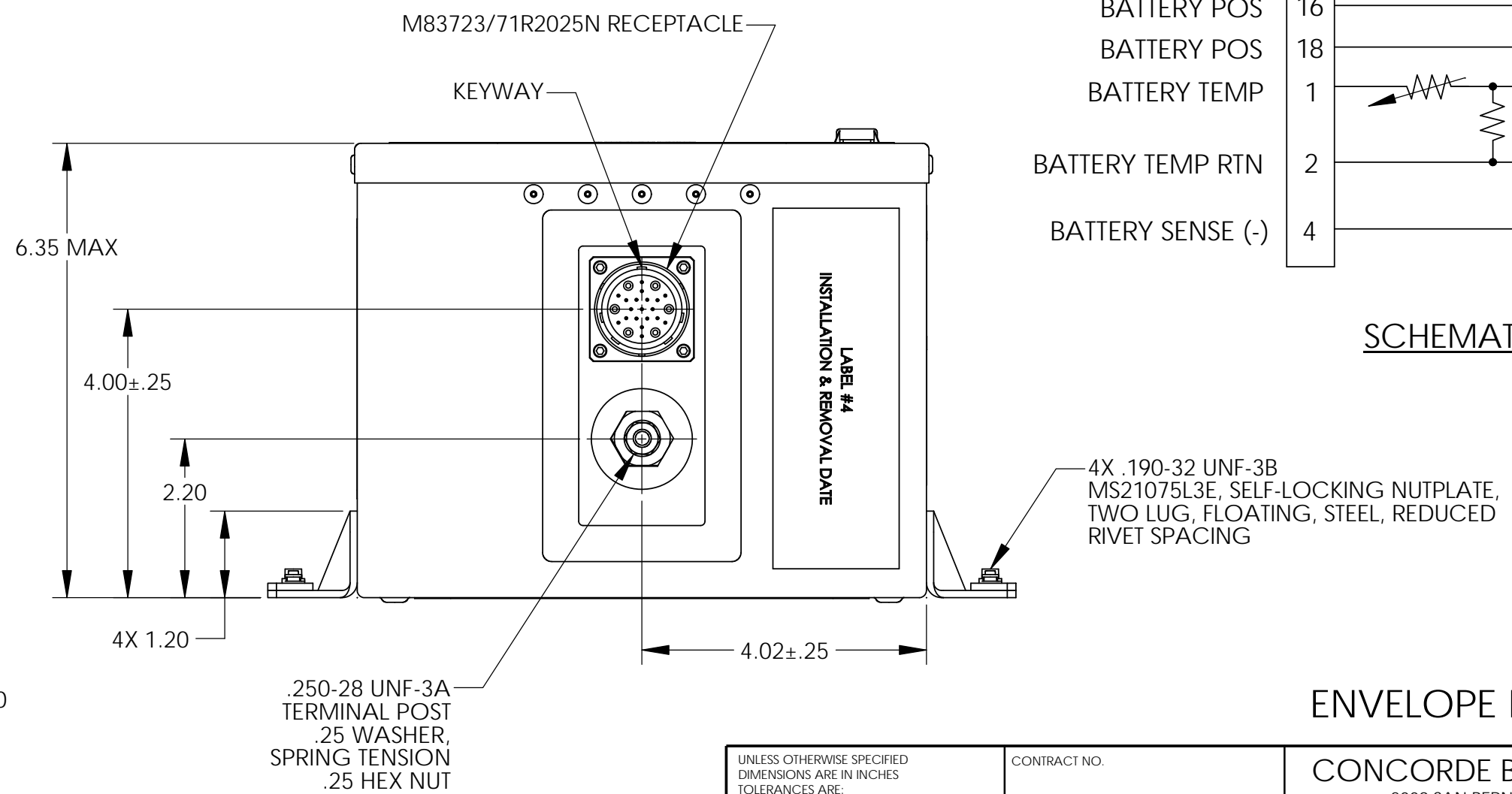
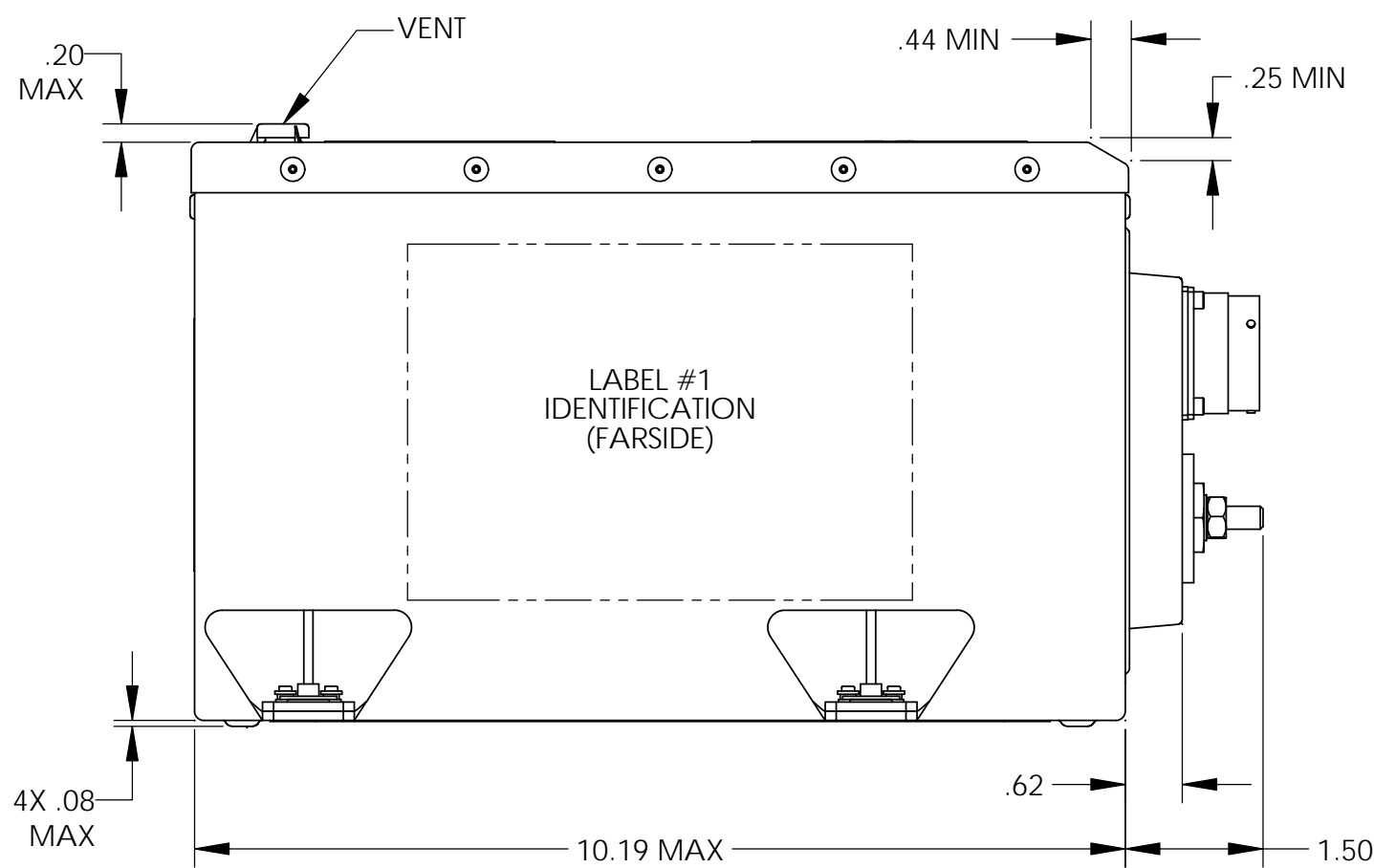
1. BATTERY CONFORMS TO THE REQUIREMENTS OF MIL-PRF-8565 AND MIL-PRF- 8565/20.
2. SEE DRAWING NO. CB-00343 AND PROCEDURE P-1000 FOR ASSEMBLY AND TEST INSTRUCTIONS. PROCEDURES AND ASSEMBLY DRAWINGS ARE FOR INTERNAL USE ONLY.
3. BATTERY MAXIMUM WEIGHT: 50.0 LBS. (22.7 Kg)
- 4  RIVETS ARE ALLOWED TO EXTEND .080 BEYOND COVER DIMENSION.



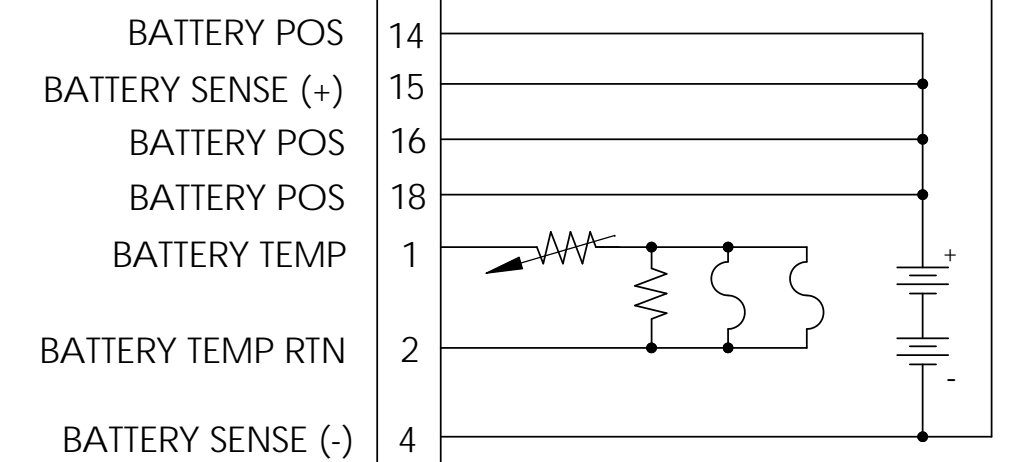
ISOMETRIC VIEW



REVISIONS			
REV	DESCRIPTION	DATE	APPROVED
B	CHANGED DRAWING TO SHOW 17 AH BLOCK 40/50 BATTERY AS PART NUMBER D8565/20-1	11/10/09	DV
C	REVISED GROUND STUD INSULATOR	2/5/15	DV



PIN ASSIGNMENT



SCHEMATIC DIAGRAM

ENVELOPE DRAWING

UNLESS OTHERWISE SPECIFIED DIMENSIONS ARE IN INCHES TOLERANCES ARE:			CONTRACT NO.		CONCORDE BATTERY CORPORATION 2009 SAN BERNARDINO RD, W. COVINA, CA 91790		
FRACTIONS	DECIMALS	ANGLES	APPROVALS	DATE	TITLE		
±1/32	.XX ±.06 .XXX ±.030	±1°	DRAWN R.MURRIETTA	1/27/06	BATTERY, STORAGE, AIRCRAFT, 24 VOLT, 17 AH		
TREATMENT	NONE	CHECKED AMIII	10/12/06	SIZE C	CAGE CODE 63017	DWG NO. D8565/20-1	REV C
FINISH	NONE	APPROVED DV	10/12/06	SCALE 1:1	SHEET 1 OF 1		
SIMILAR TO	CALC WT	ISSUED BJ	2/10/15				