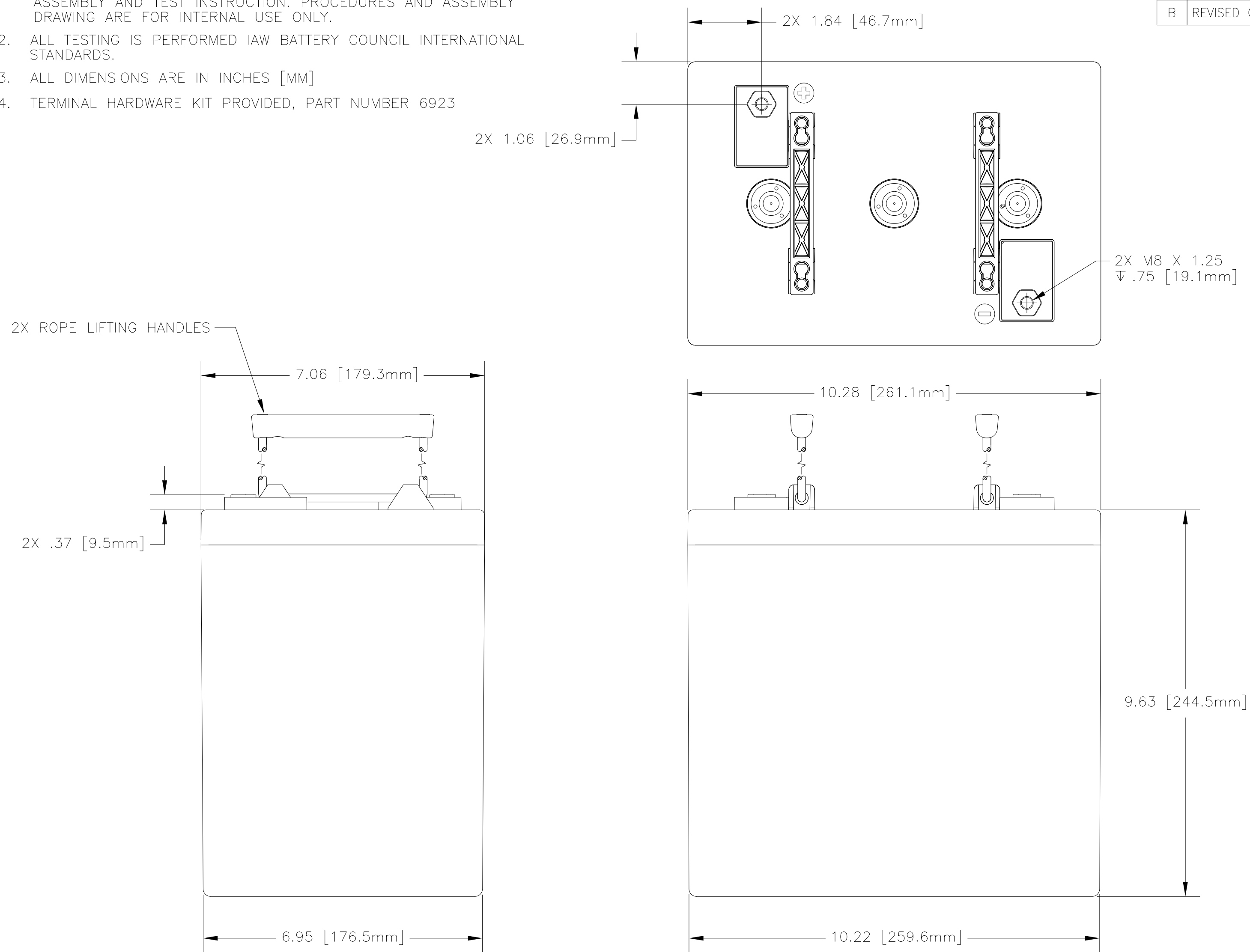


NOTES: UNLESS OTHERWISE SPECIFIED

1. SEE DRAWING NO. CB-00288 AND PROCEDURE P-1000 FOR ASSEMBLY AND TEST INSTRUCTION. PROCEDURES AND ASSEMBLY DRAWING ARE FOR INTERNAL USE ONLY.
2. ALL TESTING IS PERFORMED IAW BATTERY COUNCIL INTERNATIONAL STANDARDS.
3. ALL DIMENSIONS ARE IN INCHES [MM]
4. TERMINAL HARDWARE KIT PROVIDED, PART NUMBER 6923

REVISIONS			
REV	DESCRIPTION	DATE	APPROVED
A	CHANGED HANDLE DIRECTION	2/26/07	JBT
B	REVISED COVER & HANDLES	11/6/07	JBT



CAPACITY RATINGS	
PART NUMBER	AGM-6220T
NOMINAL WEIGHT	66 LBS [30.0 KG]
AMPERE HOUR CAPACITY @ 20 HOUR 1.75 VOLTS/CELL @ 77°F (25° C)	220 AH
MINUTES OF DISCHARGE @ 25 AMPS 1.75 VOLTS/CELL @ 77°F (25° C)	492 MIN

ENVELOPE DRAWING

QTY	RECD	CAGE CODE	PART OR IDENTIFYING NO.	NOMENCLATURE OR DESCRIPTION	MATERIAL SPECIFICATION	ITEM NO.
PARTS LIST						
UNLESS OTHERWISE SPECIFIED DIMENSIONS ARE IN INCHES TOLERANCES ARE: FRACTIONS DECIMALS ANGLES $\pm 1/32$.XX $\pm .12$ $\pm 1^\circ$.XXX $\pm .060$				CONCORDE BATTERY CORPORATION 2009 SAN BERNARDINO RD, W. COVINA, CA 91790		
TREATMENT		NONE		APPROVALS	DATE	TITLE
FINISH		NONE		DRAWN	D. AYALA	12/15/06
SIMILAR TO		N/A		CHECKED	AMIII	1/9/07
				APPROVED	JBT	1/10/07
				ISSUED	NS	11/29/07
SCALE			1/2		CAGE CODE	63017
SHEET			1		DWG NO.	AGM-6220T
OF			1		REV	B

The data/information contained herein has been reviewed and approved for general release on the basis that this document contains no export-controlled information.