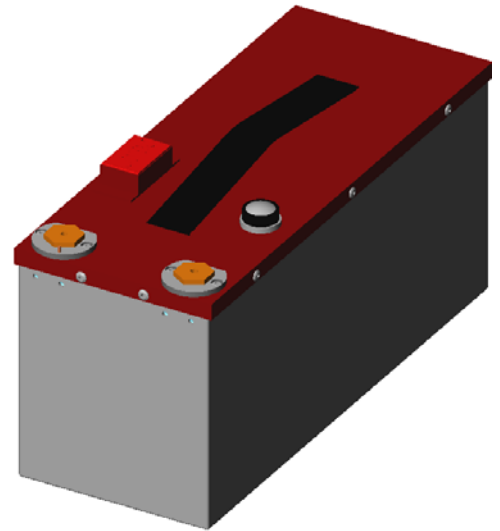


RG-28-7

28V Aircraft Battery

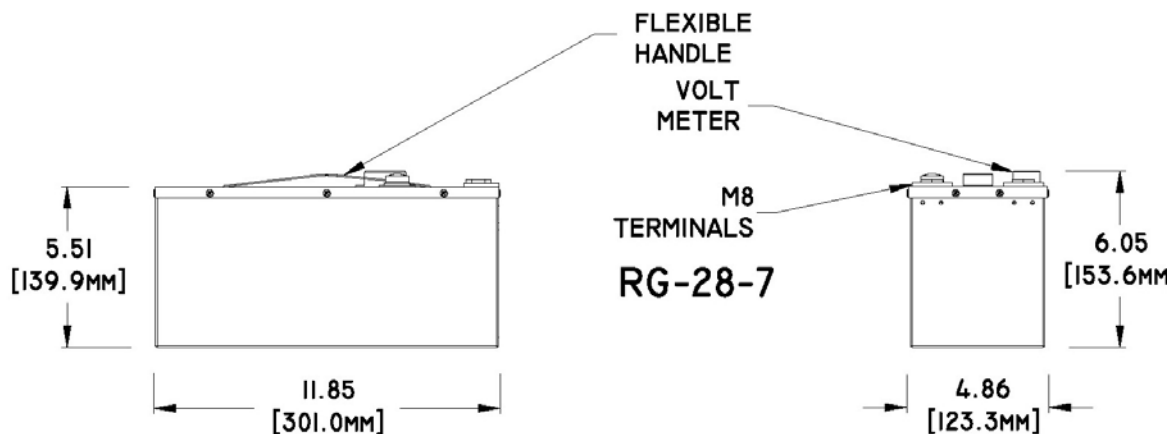
Concorde RG® Series emergency batteries protect and extend the life of other avionics and are charged directly from the DC bus with no dedicated charger. This results in a high inrush current which extends battery life with fast recovery time from discharge. With the battery connected directly to the bus, transient spikes in the DC power are absorbed by the battery. Concorde Emergency Batteries are self regulating on charge and use only the current required to maintain them at full charge.



RG-28-7 is a special purpose Recombinant Gas battery.

Concorde's RG® Series are low resistance, valve regulated lead acid (VRLA) batteries.

- Rated Capacity C₁ 9.0 Ah
- Maximum Weight 30 LB / 13.6 KG
- Built in volt meter
- Push to test button
- Terminal hardware is provide with the battery
- Superior starting power
- Maintenance free. Constructed with non removable vent valves – no addition of electrolyte or water required
- Non spillable at any altitude or attitude
- Shipped fully charged and ready to install
- The original AGM battery designed for the U.S. Military
- RG® Series batteries ship Hazmat Exempt



Concorde Battery Corporation
2009 San Bernardino Road
West Covina, CA, 91790
626-813-1234 | fax 626-813-1235
www.concordebattery.com
customer-service@concordebattery.com
ISO 9001:2000 + AS9100B