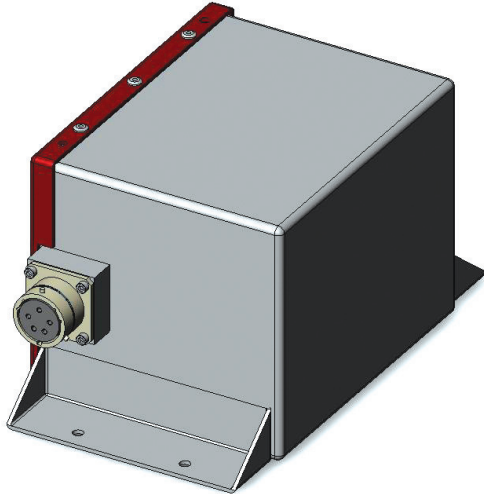


TSO AUTHORIZED



RG-122-3/RG-122-4 Specifications

Voltage	24 Volts
Rated Capacity C ₁	3.3 AH
Maximum Weight	10 LB / 4.6 KG
Not Rated for Engine Starting	

Features

RG-122-4 Battery features an Internal DC Heater

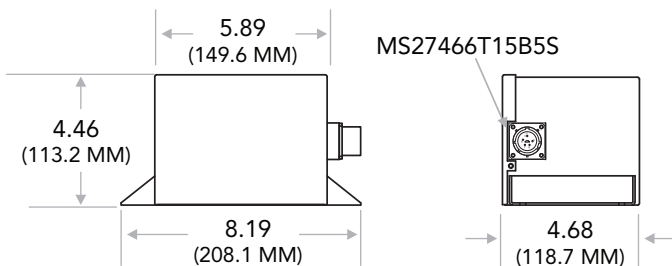
Specifications are subject to change without notice

Standby and Emergency Power

Concorde's Emergency and Standby batteries are valve regulated sealed recombinant gas (RG®), constructed with advanced lead acid and absorbed glass mat (AGM) technology.

Designed to float directly on the DC buss, there is no need for a dedicated charger. The batteries are self regulating and can accept high inrush current for fast recovery.

- Maintenance free
- Constructed with non removable vent valves – no addition of electrolyte or water required
- Aerobatic: Non spillable at any altitude or attitude
- Factory tested to assure airworthiness
- Shipped fully charged and ready to install
- RG® Series is classified as unrestricted for land, sea or air transportation
- Available through a professional network of worldwide distributors



Concorde Battery Corporation

2009 San Bernardino Road, West Covina, CA 91790 USA
 Phone 626-813-1234 | Fax 626-813-1235

ISO 9001 + AS9100

The data/information contained herein has been reviewed & approved for general release on the basis that this document contains no export controlled information.

www.concordebattery.com